



India Arch
Dialogue I **2018**

an **fed**i initiative

Moments in Architecture

An Exhibition of Architectural Photography, Talk and Events

Moments in Architecture

An Exhibition of Architectural Photography, Talk and Events



VERENDRA WAKHLOO

Matra Architects and Rurban Planners

Kashmir born Verendra Wakhloo's work philosophy centres around the search for 'timeless principles'. Mr. Wakhloo has been an academic authority at schools like TH- Karlsruhe and TVB school of Habitat studies. He has also won numerous awards like the President's Award, J.K. Awards and the GEDA prize.



SUDIPTO GHOSH

S. Ghosh and Associates

Sudipto Ghosh is a practicing architect and partner at a 44-year-old firm, S. Ghosh & Associates, in New Delhi. A graduate of CEPT, Ahmedabad and the University of Cincinnati, his career spans three continents including India, Switzerland and the US.



MADHAV RAMAN

Anagram Architects

Madhav is an architect and urbanist. He co-founded Anagram Architects in 2001, with Vaibhav Dimri. Keenly involved in academia, Madhav conducts workshops and guides research in various design schools.



RACHIT SRIVASTAVA

studio ar-ra-[y]

Rachit Srivastava, an architect and partner at Studio AR:RA:[Y]. He is a graduate from TVB School of Habitat Studies and did his training under the guidance of Mr. Verendra Wakhloo.



The Staircase Of The House Of Gaudy 2016

The stairs give a feeling of unbalance; there is no single wall that stands straight which is giving a bewildering feeling while going up the stairs.

A. TAMBOLY | www.tambolydesign.com





A



B



C

AMÉLIE LABOURDETTE | www.amelie-labourdette.com



A Non Finito 2014

For this first series on unfinished constructions, Non Finito, Amélie Labourdette focused her choice and her photographic lens on Spain, a country victim of the housing bubble collapse.

©Amélie Labourdette, Courtesy of the artist and Thierry Bigaignon Gallery.

B Non Finito (El Quiñon, Seseña) 2014

Through the series, Non Finito (in Spain), Amélie Labourdette tries jointly through an «archaeology of present» to reflect the contemporary history by the yardstick of these unfinished architectures, while invoking the viewer's imagination so that there unfolds "a variant of the world".

©Amélie Labourdette, courtesy of the artist and Thierry Bigaignon Gallery.

C Traces Of A Human Occupation. Military Barracks Of French Protectorate. Contemporary Period, Tunisia, 2016

Between upcoming ruins and potential sculptures, these unfinished buildings are drawing the figure of a strange present between dystopia and utopia, reflecting the depths of a familiar human history, made of hubris and vanity, of entropy and inevitable return to dust.

©Amélie Labourdette, courtesy of the artist and Thierry Bigaignon Gallery.



ANDRIA DARIUS PAN CRAZI | www.instagram.com/pancrazi



Riviera Reveries 2017

The Corsica Island, (A mountainous North Mediterranean island, presents a mix of stylish coastal towns, dense forest, and craggy peaks). For each photo I took, I try to channel that dream like, surreal mystery.



ANKIT JAIN | <https://www.instagram.com/walkablecities>



- A Chaotic Historic Future 2017
The history in the frame of "today" speaks of the "future"
- B Known Unknown Realm? 2017
Combining stories to build on the confusing past.
- C Merging Boundaries 2017
The sea like the city consumes, the boundary like people emerges.
- D Rigidly Vulnerable Being 2016
When the structure exposes itself to the elements of emotion and life.
- E Ringin' Life 2017
When being overpowers the monumental.



Hazratbal Mosque On The Night Of Eid 2017

The men sat in complete harmony. In peace, praying. With the tomb in the background lit up on the night of Eid. Contrary to the idea we have about Srinagar and Kashmir in the recent years.



AVANI RAI | <https://www.facebook.com/raiavani24>



B R S SREENAG | www.sreenagpictures.com



A [Benches Along The Chicago Riverwalk 2017](#)

I captured everything that made Chicago special, across three seasons. Nestled between iconic buildings, alongside the River, is the Chicago Riverwalk - a place to sit and enjoy an afternoon or a path to simply get around.

B [Morse Code Balconies at 235 Van Buren, Chicago 2016](#)

235 Van Buren's most distinctive feature is the long & short balconies that pepper the side of the building, giving the appearance of Morse Code. On this building, entire balconies are made to appear like an intricate design.

C [Verrazano Bridge From The Staten Island Ferry 2016](#)

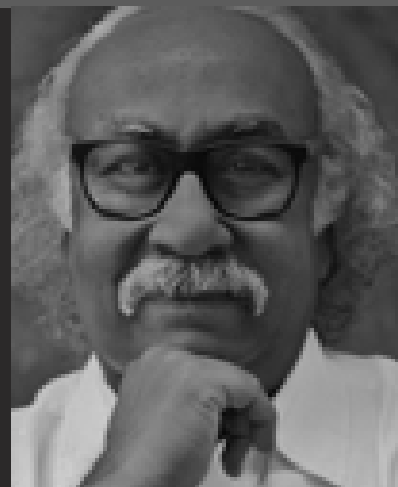
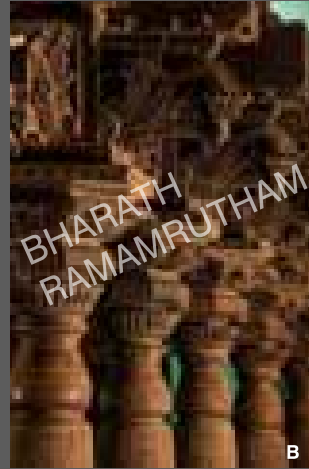
A few summer days I spent in New York is what I feel made this photo really work, the humidity, which gave the Verrazano Bridge and the boats a ghostly, ethereal feel - softening the grunge and the noise that is the NYC experience.



BHARAT AGGARWAL | www.bharataggarwal.com

Samay 2015

The lanes of old Ahmedabad show not just it's beautiful old architecture but also how it's people, who are mostly aged , manage their day to day life. The entire feel of the lanes showcase the reality of life in a very subtle and grounded sense.



A [Hampi, Karnataka 2001 – 2017](#)

B [Mansions of Chettinad, Tamil Nadu 2014 – 2015](#)

C [Mansions of Chettinad, Tamil Nadu 2014 – 2015](#)

BHARATH RAMAMRUTHAM | www.bharathram.com



The Abandoned Trump Taj Mahal 2017

In the 1970s Atlantic City, New Jersey turned to casino gambling as an antidote to the urban decline that plagued the popular beach destination. Donald Trump owned four casinos – all failed – including “the 8th wonder” the Trump Taj Mahal.

BRIAN ROSE | www.brianrose.com





A



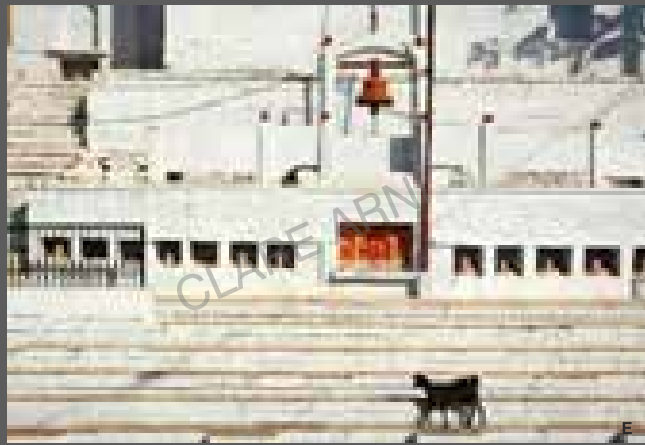
B



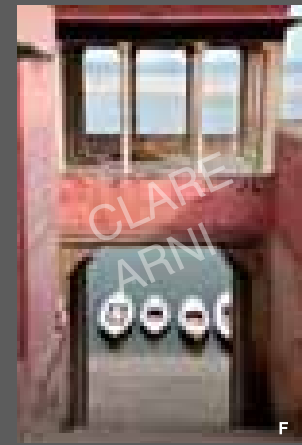
C



D



E



F

CLARE ARNI | www.clarearni.com



A Bahmani 15th Century Solah Khamba Mosque, Bidar Fort 2008

Sculptural pillared forms in receding rhythms of shadow and texture.

B Before the show - Behind the circus curtain, Bangalore 2008

Behind the scenes of the circus, a young woman awaits her turn. Her colours of trepidation, Gemini circus, Bangalore 2008.

C Kotachiwadi, Mumbai 2014

Finding the beauty of life even in the most minimal spaces of maximum city.

D Layered bricks- Jaipur brick kiln, 2013

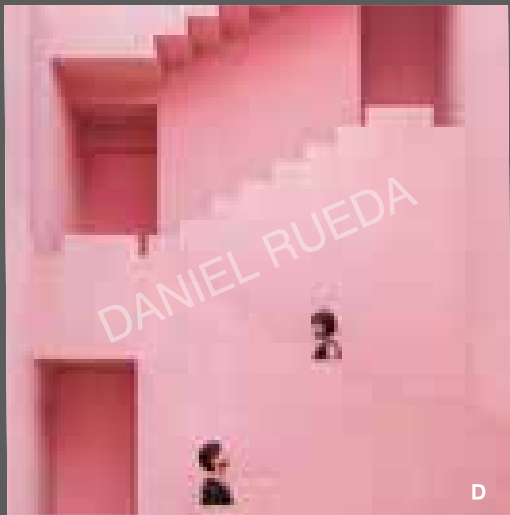
Layered bricks, drying in the desert sun, Jaipur 2013.

E Manikarnika Ghat, Banaras 2005

Architecture reflects spiritual progress as the Chakrapushkarini tank's water washes away sins.

F Varanasi Ghats 2013

Architecture unintentionally frames an ephemeral scene of boats awaiting pilgrims.



DANIEL RUEDA | [instagram.com/drcuerda](https://www.instagram.com/drcuerda)

A Architecture Fun - Pinakothek der Moderne,
by Stephan Braunfels, Munich

Rueda's images showcase beautiful architecture around the world, and a unique way of experiencing everyday life and interacting with their surroundings.

B Digital Rain - Almond Center by Beatriz Cubell,
Spain 2017

A quirky collection of photos set across the globe featuring bold patterns, simple shapes, and pastel colours. The snapshots convey a wide range of architectural styles, structures, a way of experiencing everyday life and interaction with surroundings.

C I Believe I Can Pink - Mira Shopping Centre,
Gesellschaft Von Architekt, Munich

A quirky and creative collection of photos set in cities across the globe and featuring bold patterns, simple shapes, and pastel colours. Rueda's snapshots convey a wide range of architectural styles and structures.

E White Steps - Grande Arche De La Défense,
Paris 2017

The images by Rueda showcase beautiful architecture around the world, and a unique way of experiencing everyday life and interacting with their surroundings.

D Two Squared - Muralla Roja By Ricardo Bofill,
In Alicante 2017

A creative collection of photos set across the globe and featuring bold patterns, simple shapes, and pastel colours. The images showcase beautiful architecture around the world, and a unique way of experiencing everyday life and their surroundings.



Boys At Private Prep School, Beaconsfield
UK 2015

Boys at play in front of reception level entrance of the school. We were experimenting with the boys as spontaneously as possible in order to make images that were both about the architecture of the building and the pupils inhabiting the new structure.

DENNIS GILBERT | www.dennisgilbert.com





A Shrine Room, Nagapattinam, Tamil Nadu 2006

A fine traditional home in Nagapattinam. When the door to the shrine room was opened for me I was struck by just the two sources of natural light; an oil lamp and a fanlight. Sadly, the house has now been destroyed.

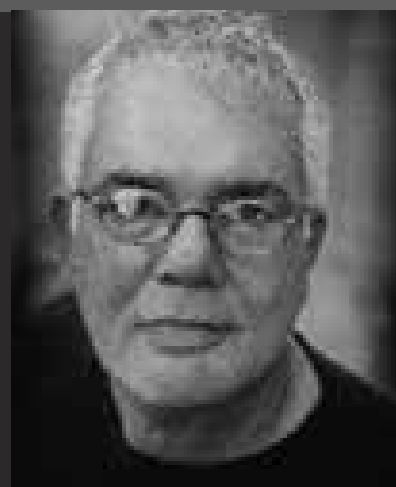
B The Town Of Thula, Yemen 2007

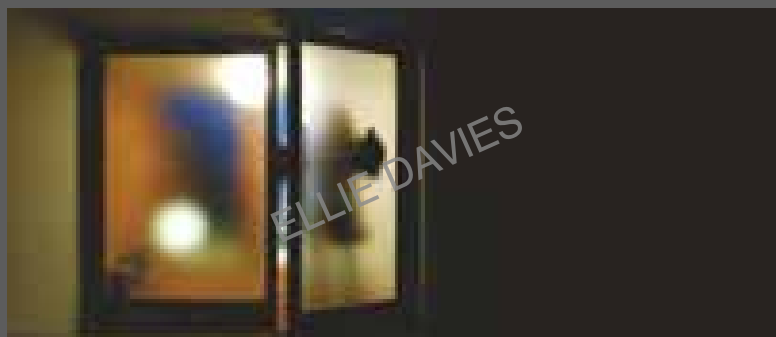
Just a beautiful street & wall. Nothing more to say!

C Yellow Sari & Blue Detail, Udaipur 1990

Color down a street in Udaipur. Yellow White and Blue....Bliss.

DOMINIC SANSONI | www.threeblindmen.com



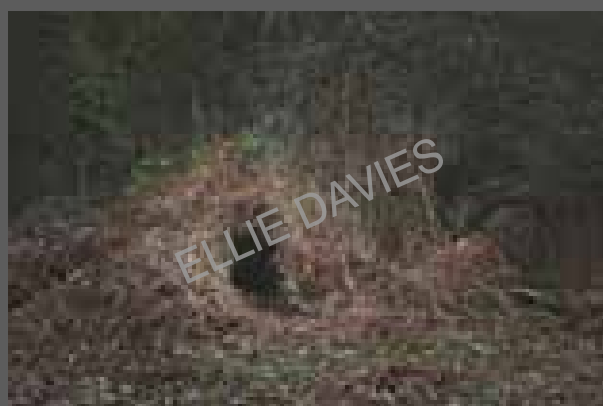
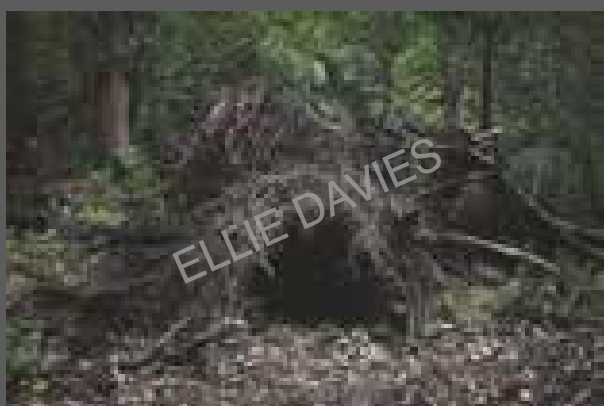


After Dark 2008

© Crane Kalman Brighton Gallery, UK

Creating a dreamlike tension, an indefinable sense of menace within the spaces plays dialogues between the people depicted. Everyday anxieties and childhood memories, the images reflect on the fine line between reality and fantasy.

ELLIE DAVIES | elliedavies.co.uk



ELLIE DAVIES | elliedavies.co.uk



Dwellings, 2012

© Crane Kalman Brighton Gallery, UK

Creating a dreamlike tension, an indefinable sense of menace within the spaces plays dialogues between the people depicted. Everyday anxieties and childhood memories, the images reflect on the fine line between reality and fantasy.

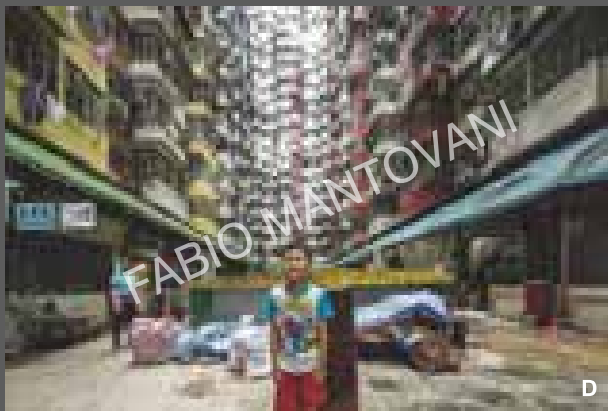


Vantage Point 2008

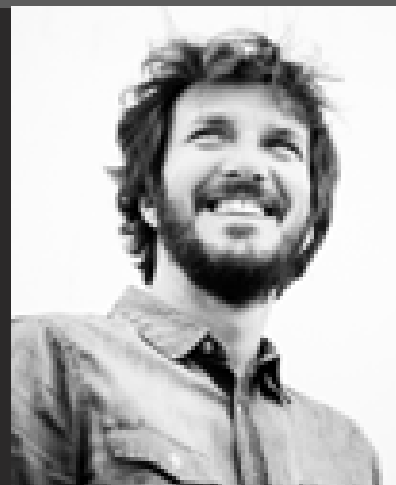
© Crane Kalman Brighton Gallery, UK

Nighttime and twilight settings distance the viewer from the everyday, entering a world of psychological uncertainty, where things are not always as they seem. Familiar spaces are rendered peculiar by the night.

ELLIE DAVIES | elliedavies.co.uk



FABIO MANTOVANI | www.fabiomantovani.com



A Choi Hung Estates - Hong Kong 2016

Choi Hung Estates houses over 18,000 people. Rumor has it that the government chose a colorful theme to raise the spirits of its people, indeed Choi Hung means "rainbow". It is a great example of how public space can be experienced

B Gallaratese District, Milan – Italy 2012

(One hundred popular houses), a journey through Italian social architecture. Many think this architecture identifies social degradation and discomfort but The Gallaratese is a clear example of lush interior gardens & well maintained buildings.

C Le Vele di Scampia, Naples – Italy 2016

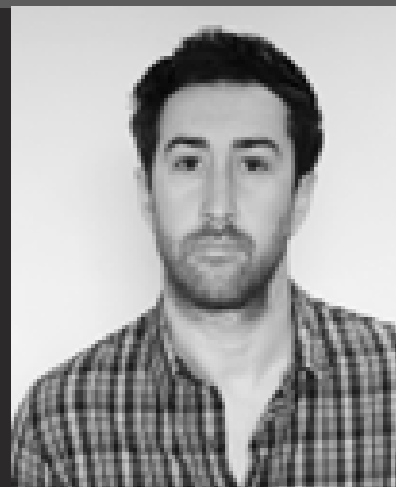
(One hundred popular houses), the collective residences of Italy. My aim was to testify what happened forty years later to "city in the cities" sometimes showing the success, others a failing, but never insisting on greedy spectators celebrating the triumphs.

D The Montane Mansion, Quarry Bay - Hong Kong 2016

A view of the inner courtyard of one of the most crowded collective housing of the city. This shot is part of a photographic essay (in progress) on collective residences of densely inhabited cities.



FABRICE FOUILLET | www.fabricefouillet.com



A Berlin Philharmonie by Hans Scharoun.
Berlin, Germany 2016

This picture is from a reportage for the Berlin Philharmonie. This building is inspiring by its color and shape and is still very modern despite its completion in 1964.

B Eurasisme – curve ball. Astana , Kazakhstan 2013

This image of a curve ball attracted me as the concrete pillars in the fore ground appeared as a symbol announcing the background and recalling a large site under construction seemingly unfinished.

C Heydar Aliyev Cultural Center of Baku.
Azerbaijan 2016

As part of an Architectural reportage, it is interesting how a building fits in its environment. Height of view is often difficult to access. I was lucky that the guardian of the building, let me access the terrace.



FRANCIS MESLET | www.francismeslet.photo



A Sleeping Duty- Abandoned Castle.
Belgium 2016

That neoclassical castle of the High Arches dating from the nineteenth century was ravaged by a fire in the night of 18 to 19 December 1993. It has never been rebuilt and is in ruins.

B The Tree That Hides The Aphorism. Italy 2016

This romantic Italian villa has known the rich hours of Italian nobility before being abandoned. Today in the state of ruins, it still shows the rest of its majestic past.

C Whatever Happened To The Last Princes.
Portugal 2015

Dictator's Palace, Portugal. Built in the 1800s. The palace was known for its highly-decorated interiors and panels of tiles. The building was bought by the Portuguese state in 1928, who largely defaced and never renovated it.



A



B

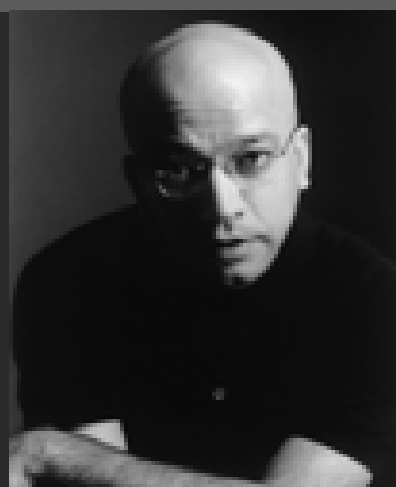
A All that is Ancient 2014

This image takes me back in time and reconnects me to my roots. The old man, in his traditional attire, evokes cherished memories of the food cooked on the angithi, once upon a time at our house in Old Delhi.

B Some Shift, Some Stay 2014

My childhood was spent in the by lanes of Old Delhi - on revisiting those lanes, I witness the inevitable changes that affect the city. However, the languid pace of life and a thriving pluralism bestow the city an enduring, timeless quality!

HEMANT J KHENDILWAL | www.hemantjkhendilwal.com





A Lund Hagem. Knappullet 2015

An image architect Svein Lunds and his personal cabin, Knappullet, Norway..

B Untitled. Dvale 2007

"First and foremost, Dvale should be described as a project both of alternative architecture-photography and of alternative landscape-photography; Ivar Kvaal shows the beauty of the skeleton and the process, celebrating states and rooms, which, as depicted, are already forever lost."

IVAR KVAAL | www.ivarkvaal.com



A [Aquatics, London 2012](#)

This was one image made at the London 2012 Olympic Games just before the event. The Aquatics, designed by Zaha Hadid was a joy to photograph with all her signature curves and concrete.

B [Balcony And Glass On Palm Jumeirah 2017](#)

A clean graphic image of design of the Muraba Residences in Dubai- The glass fins texture mirrors the water and the strong glass balcony divides the soft horizon. The gentle light and a low depth of field in lens create softness.

C [Cooling Glass Panels At Muraba Residences, Dubai 2017](#)

The reflection in the image softens the visual and creates a slightly confusing photo, but the cool colors, and composition illustrated the calm feeling of the building, and hinted at the amazing views.

D [Jockey Club Innovation Tower, Hong Kong 2015](#)

Zaha Hadid building with huge open interior areas with vast stairways- The forms and shapes within the building were beautiful and dissecting and translating the building into 2D graphic images.

E [Pool At Muraba Residences, Palm Jumeirah, Dubai 2017](#)

Capturing this beautifully designed residential development in Dubai in the cool morning light was a joy. Shot from the roof down onto the pool, before any harsh light hit it, created a nice clean graphic.





A



B

JOÃO MORGADO | www.joaomorgado.com



A Swimming Pool Designed By Alvaro Siza Vieira 2013

This image was awarded in 2014 with the ARCAID Architecture Photography award in "Sense of Place" category. It is an image full of incredible small details, such as people swimming or even looking at the camera up in the sky.

B Dallah In Kuwait 2015

It was one of my first assignments in Kuwait for Associated Architects Partnership studio to photograph a small coffee shop in the city center. It was important to capture the atmosphere of the city, its scale and the relation with the project. It is an image with an incredible depth because of all the different scales.

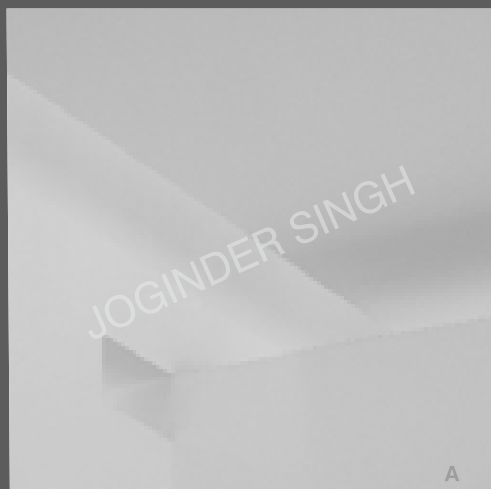


Labyrinth Triptych 2006

We are faced with choices in the labyrinth of life. The choices presented in these photographs are visually contradictory. The normal way of looking at a building does not seem to make sense. The light comes simultaneously from different directions. Which way shall we go when normal is not apparent?

JOE LIPKA | www.joelipkaphoto.com





A



B



C



D



E

A Untitled - 01.JPG 2017

The image is a visual exploration of abstraction in architecture via a geometrical analysis in a defined frame – in this case a square. The aspect ratio of a square frame suddenly removes two critical components used in composition - height and width...the photographer enjoys arranging elements within such a frame in a manner that leads to visual movement.

B Untitled -03.JPG 2017

The image is a visual exploration of abstraction in architecture via a geometrical analysis in a defined frame – in this case a square. The aspect ratio of a square frame suddenly removes two critical components used in composition - height and width...the photographer enjoys arranging elements within such a frame in a manner that leads to visual movement.

C Untitled 2003

The staircase in monochrome...light from the full moon highlights each tread, washes the wall with a soft glow...the wall changes thickness...the light brings it out in sharp relief...a view never perceived in the day or in the light of the single bulb in the staircase...the absence brings out the presence!

D Untitled 2010

The staircase in monochrome, accented by a colored railing...the treads highlighted with a lighter edge, radiating geometry...the spiral into nothingness...visual movement that draws the eye in, is the movement inwards or outwards? A churning of the senses...



E Untitled 2017

The image is a visual exploration of abstraction in architecture via a geometrical analysis in a defined frame – in this case a square. The aspect ratio of a square frame suddenly removes two critical components used in composition - height and width...the photographer enjoys arranging elements within such a frame in a manner that leads to visual movement.



Cape Town, South Africa 2017

Cape Town's prominent grain silo was once used to store and grade maize from all over South Africa. But with the advent of containerised shipping, the huge piece of concrete infrastructure was decommissioned and has been transformed into the new museum of contemporary art.

JULIEN LANOO | www.julienlanoo.com





A



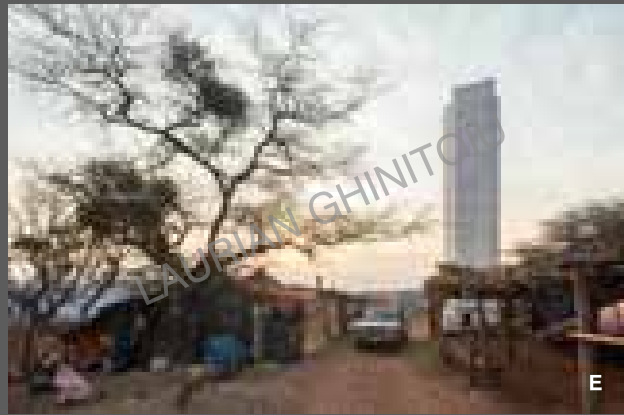
B



C



D



E

LAURIAN GHINITOIU | www.laurianghinitoiu.com



E Christ & Gantenbein - Ruta Del Peregrino - Cerro del Obispo -Guadalajara 2017

Informal settlements are dismantled in the early morning of the last day of the pilgrimage. For a week the small shops and restaurants are welcoming visitors, providing them with a place to rest after a long hike.

A Big Serpentine Pavilion, London 2016

Every year the pavilion is designed by a different architect who never built something in the UK. Each design needs to meet a number of conditions, one being the possibility to gather people together for different purposes. The photo was taken during the opening.

B Big Tirpitz 2017

Considering a top view representative for "the incisions" into the dunes, I bought the drone a day before visiting the project. The photo was taken during my second flight as a pilot, after a short test.

C Big - Via57w, Ny 2016

The first moment of craziness in my photographic career. An urgent visa for USA, last minute flight, 2 minutes of fog, looking to be the first capturing the big change in NY skyline. After a week the photo was selected for the BIG's monograph by A+U, as a cover.

D Christ & Gantenbein - Kunst Museum - Basel 2016

The materiality and textures, the wooden floor, the atmosphere, the old guy resting, all together could be part of David Howckney's interior paintings from the 70's



H



J



K



L

LAURIAN GHINITOIU | www.laurianghinitoiu.com



L MAD - Chaoyang Park, Beijing 2017

While the skyline of Beijing is renewed by a new business skyscraper, the amateur fisherman's from Chaoyang Park are continuing their daily routine.

H Herzog & de Meuron - Elbphilharmonie - Hamburg 2017

The sunrise light over the port is reinforcing the Philharmonie silhouette, which seems an over-scaled continuation of the wave's pattern.

I Kazuyo Sejima - Dior Showroom - Tokyo 2015

During the evening, the building acts as a signal which helps you orientate around the neighbourhood. From the small and quiet streets you can easily find the way and go towards the busy boulevard of Omotesando.

J Kazuyo Sejima - Sumida Hokusai Museum, Tokyo 2017

The Museum's materiality helps to blend it into the context, without disturbing the lively plaza in front. A group of Children of all ages, their mothers, both tourists and locals, are enjoying a casual afternoon.

K Louis Kahn - IIMA - Ahmedabad 2016

Early morning sun ray is entering the building, reinforcing Louis Kahn's ability to play with light and shadow. In this particular project, the voids and the volumes are a direct response to the hot climate from India.



LAURIAN GHINITOIU | www.laurianghinitoiu.com



Q Toyo Ito - Barocco Museum. Puebla 2017

Two extremes of the world meet: Mexican Gardner watering the sharp landscape, in the background as a contrast, the clean and precise sinuous lines of Japanese contemporary architecture.

M MVRDV - The Stairs to Kriterion. Rotterdam 2016

Temporary scaffolding installation providing visitors with an overview towards the rebuilt city. Although was visited by thousands of people daily, the silhouette of a man, climbing and experience few minutes of solitude, seems to question his personal achievement, and maybe also the entire city redevelopment.

N Nendo - 50 Manga Chairs. Milan 2016

The 50 redesigned chairs installation is hosted by the theology faculty in Milan for the design week. The bright white podium and the black background, are meant to highlight the lines of the chairs, the old arches but also the visitor's silhouettes.

O Sanaa - Zollverein School. Essen 2016

At first sight the school looks like a massive concrete block out of context. On a late autumn morning, the foggy atmosphere and the low sun light, are highlighting the chaotic perforation, making it very flimsy and transparent.

P Sou Fujimoto - Forest Of Light. Milan 2016

Light installation for the fashion brand COS. While the cones of light are slightly changing in intensity - a group of visitors were dumbfounded by the atmosphere created by very simple elements: light, smoke and mirrors.



LAURIAN GHINITOIU | www.laurianghinitoiu.com



R Yi Architects - City Library, Stuttgart 2015

Part of the entrance lobby, the central core has been designed as a closed semi-public plaza. With a vertical opening on 4 levels, the space is connected with the reading rooms, offices, and other public functions.

S Zaha Hadid - Maxxi Museum, Rome 2015

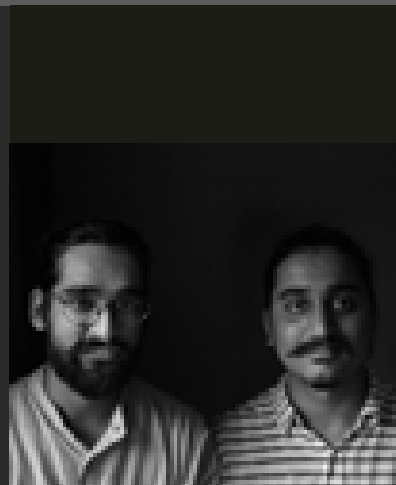
The decisive moment, the composition, the tension and the accuracy of the shoot, are looking to capture the sharpness design and the complex engineering behind.

T ZHA - Porthouse - Antwerp 2016

A worker's silhouette doing the final check is revealing the impressive and over-scaled addition. The photo was taken few hours before the press opening



LOKESH DANG & SAURABH SURYAN | www.suryandang.com



A Two And A Half Spaces 2016

In a dense fabric like Tukhmirpur, East Delhi- This space is a vessel of rain, air, light and substance which transforms from a parking to a dressing area hosting numerous conversations over tea.

B Death Of A Nation 2017

The last architect to occupy hall of nation with the fear of someone dying in the family - Hours later from the time the image was taken, while editing there was a message from a friend, the image of death of the nation.

C Residence MB 2017

Between the brutal concrete surface and medieval Indian brass lies this space with a wash of the winter sun. Long textured walls, wedged vertical volumes sit on top of a cyan water body, extending the presence with subtle reflections.



A



B



C



D



E



F

MARTIN STAVARS | www.martinstavars.com



F Urban Swimmers, Chongqing, China 2016

Awe inspiring forty-story structures shield the micro farms that feed the city's inhabitants, and river banks offer opportunity to the many fishermen who labor daily to feed their families.

A Circle of Light, Tongyuanju, Chongqing, China 2016

The varying heights of structures spot the horizon, as Chongqing glows throughout the night.

B Footbridge, Chongqing, China 2012

Key areas of Chongqing are connected by incredibly high bridges and roads which dwarf the many valleys created by the mountains. These superstructures above the city—present a surreal thick, monochromatic character.

C Jia Ling Jiang Bridge, Study 2, Chongqing, China 2012

Chongqing stands shrouded in fog, even the sun struggles to cut through. Chongqing is built upon mountainous terrain. Key areas of Chongqing are connected by high bridges and roads which dwarf many valleys created by the mountains.

D La Défense, Study 1, Paris, France 2010

E Monorail, Chongqing, China, 2012

Key areas of Chongqing are connected by high bridges and roads which dwarf the many valleys. These superstructures and the Chongqing Metro form a cyberpunk lattice above the city—presenting a surreal thick, monochromatic character



MASSIMO SIRAGUSA | www.massimosiragusa.it



A Rome -Piazza del Popolo 2017

This picture taken during a performance by Ha Shult, a German artist with his army of soldiers- The monumental work is born from industrial and urban waste. The "ecological" sculpture is called "Dumpster People".

B Turin-Teatro Regio 2012

The picture belongs to a complex and long work about Italy which, after a while, became a book: "Teatro d'Italia". It is a research about the venues which characterise the culture and the beauty of the territory.

C Ummari, Trapani, Borgo Livio Bassi 2009

The photo belongs to a work on the agricultural villages built during the Fascist regime in Sicily. The architecture of the country respects the rationalist rules of the period. The villages were built to cover the repopulation politics of the countryside.



MITUL DESAI | https://www.flickr.com/photos/mitul_desai/



A Stone Pavilions, Rajasthan, India 2012

Workers in a quarry relentlessly cut stone, pausing briefly for shade and water. The only places of respite for them in this vast heat-bowl are these elemental stone pavilions which crop-up from the stones lying around.

B Stone pavilion, Rajasthan 2012

Temporary stone shelters often become timeless, inserts in a vast and empty landscape of Rajasthan. These shelters outlive their purpose and become mythical entities.

C Mosquito Net Colony, Surat, India 2011

Seasonal migrants to cities keep all of their belongings tucked away on the sidewalks to open it up only at night. Their only physical presence in the urban landscape is these ephemeral mosquito net colonies, which emerge at night, which disappear every morning.

D Saree Building, Surat, India 2011

A residential building is used for textile industry units. Migrant workers live and work relentlessly in these spaces giving finishing touches to sarees. These sarees are left out to dry after the final wash and veil the building before the dispatch.

E Jaisalmer Granary, Jaisalmer, India 2012

An ancient granary in the Jaisalmer fort constructed out of stone, wood and lime. Entirely daubed with lime-wash and lined with cow dung floor becomes transcendental and sensorial. Light entering from the small openings adds to the phenomenal interiority.



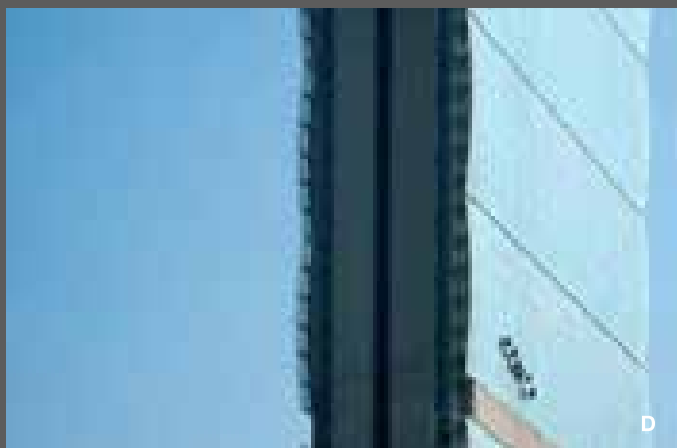
A



B



C



D



MOLTENI-MOTTA-GIUSEPPE MOLTENI AND ROBERTA MOTTA | www.moltenimottafotografie.com

A Staircase in Farnese Palace 1979

Giuseppe Molteni & Roberta Motta have been creating photographic adventures related to Architecture, interiors and Art. This image has been shot for the book Castles and Palace in Italy Readers Digest Edition.

B Monreale and Palermo 1993

Giuseppe Molteni & Roberta Motta have been creating photographic adventures related to Architecture, interiors and Art. This image has been shot for the cover of an Italian magazine "Ville Giardini".

C Milano 2014

Giuseppe Molteni & Roberta Motta have been creating photographic adventures related to Architecture, interiors and Art. This image has been shot for the book Milano, editor- Mondadori.

D Milano 2015

Giuseppe Molteni & Roberta Motta have been creating photographic adventures related to Architecture, interiors and Art. This image has been shot for the book Milano, editor- Mondadori.

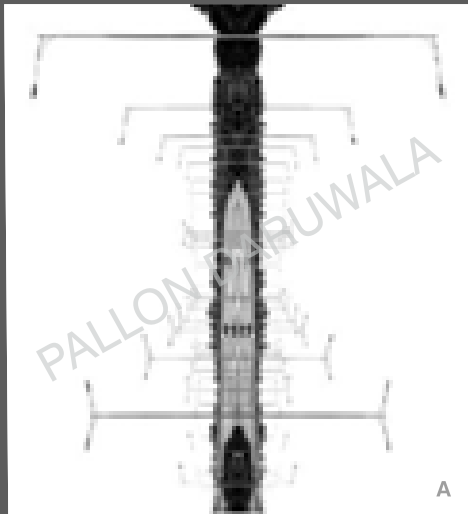


Amer Fort, Jaipur 2014

The morning light, the props lying unmindfully and the shadow seeps into the corridor enhancing the Horseshoe arches, typical of Islamic architecture, almost as mirror effects.



MOUSHUMEE K JHA | www.moushumeekjha.com



PALLON DARUWALA | www.pallonimages.com



A Vertical Horizon, May 2009

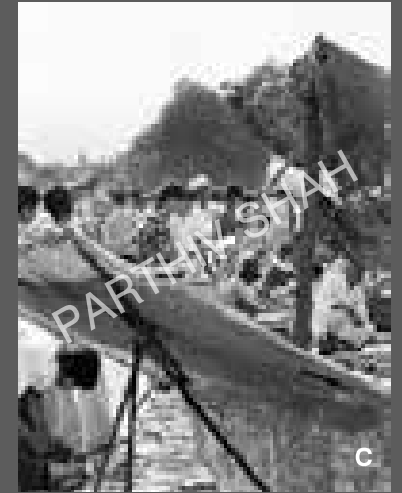
Vertical Horizon is inspired by the musings of Stephen Hawking, when he wondered: "What if the world is so strange that we could never hope to understand it ...and science was wasting its time trying to do so." Taking the concept forward, I wondered... How strange could this world have REALLY been?

B Vertical Horizon-ii, June 2016

I pictured myself looking at the earth from a spaceship and it looked like a large, round pin-cushion with people, animals, buildings etc. protruding out like pins that had been stuck into it. This is my theoretical, visual interpretation...rest I leave to your thoughts.

C Vertical Horizon, May 2009

Vertical Horizon is inspired by the musings of Stephen Hawking, when he wondered: "What if the world is so strange that we could never hope to understand it ...and science was wasting its time trying to do so." Taking the concept forward, I wondered... How strange could this world have REALLY been?



PARTHIV SHAH | www.cmaconline.org



A Jaisalmer, Rajasthan

A most interesting construction in staircase design. The play of morning light in the image highlights the staircase. The man with turban, reading newspaper adds an anecdote to this typical Rajasthan architecture.

B Mobile towers, Hajiali, Mumbai

Forced and (un)planned additions of modernity such as the mobile towers, water tanks and television antenna are prolific in their urban presence.

C Sunday Flea Market, Sabarmati, Ahmedabad

A cultural symbol of Ahmedabad stands out for its simple structure. A basic solution with makeshift shelters created for temporary use that is done with a perfect understanding and knowhow of space and structure. Unfortunately the market has to make way for the newly designed river front.



PARUL SHARMA | www.parulscape.com



A “If The Doors Of Perception Were Cleansed
Everything Would Appear To Man As It Is,
Infinite.” William Blake 2017

I had a hard time understanding trigonometry and geometry in school, so when this linear narrative of angles on rooftop of an automotive factory caught my eye it was a perfect meld of the aesthetics, maths and infinity.

B “Pleasure Was The Color Of The Time.”
Harold Clurman 2016

The Claridges Hotel, built in 1952 and even today, the play of curves, light and its nostalgic setting in Lutyens Delhi evokes images of colonial Delhi. This shot of moonlight clouds shadows and the light of a hotel window to me told a hundred fascinating stories.



A “Modern Play”- Mies van der Rohe’s Barcelona Pavilion 2011

The Barcelona Pavilion, that Modernistic landmark is hardly a place one associates with leisure or relaxed play. Yet, for this youth, it was simply an invitation to lie down, soak in the sun and lazily feel the water of the reflecting pool. It was all about that moment, gently softening our perception of the minimalist design.

B “The Deep” 2016

I actually tried to take this photo 3 times. Besides angle being right, something was not working. It was the light! Finally, Sun bathed the space that emphasized the depth of perspective. It’s quite fitting, since for Kahn the concept of Time was directly associated with light.

C “Horizons” -Louis Kahn’s Salk Institute 2016

This photo is about the connection of that perfect space, the piazza, with the ocean: the water feature leading towards the low wall that evokes the horizontally of the Ocean horizon just beyond the wall, integrating both the architecture and the photo to its context.

D “Full Circle” 2013

It’s the expression of the physicality of architectural object itself that interests me. But sometimes, like in this case, the human figure gives it a more complex reading. The man standing by the window makes a strong statement on the scale of the space and the relation between interior and exterior, bringing the image full circle to the essence of the design.

E “Skewed” 2012

This photo was taken on the day of the opening of the Eli and Edythe Broad Art Museum at Michigan State University, designed by Zaha Hadid architects. The stairs angle, the man head and body slightly tilted to the side, all play off the radical angularity of the building, highlighting Hadid’s trademark bold approach to geometry.





PRARTHANA MODI | www.prarthanamodi.com

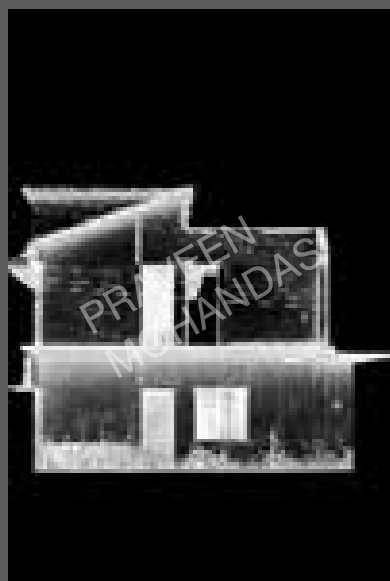


A Alcove in the Queen's Bath, Hampi 2013

The perfect symmetry, the mathematical beauty, made without the any modern day technology, is humbling. The way natural light was used to create a peaceful environment for a bath is breathtaking in its simplicity and purity.

B Tourist in Siena, Italy 2010

The mathematical accuracy with which such large structures were made, their sturdiness standing the test of time, and the realization how small man is in relation to all of creation, was enough to give one a moment to pause and appreciate the grandeur of God's creation and man's.



PRAVEEN MOHANDAS | www.creativenaturephotography.net

Obituary Of A Martyr

In this photography work the half demolished exposed buildings become a metaphor representing the shattered life of the occupants and the building itself. The building here writes its own obituary exposing itself and the history it had as that of a martyr who was murdered in the name of the development.



A Big Buddhas, Small Buddhas, Phuket, Thailand 2017

Traces of Buddhism is quite prominent in South East Asia. Here is one such monastery surrounded by Lamas.

B In The Manchester Of India, Ahmedabad, Gujarat 2013

Gujarat being the hub for textile, plenty of small scale businesses have been flourishing here since many generations.

RADHIKA PANDIT | www.radhikapandit.photography



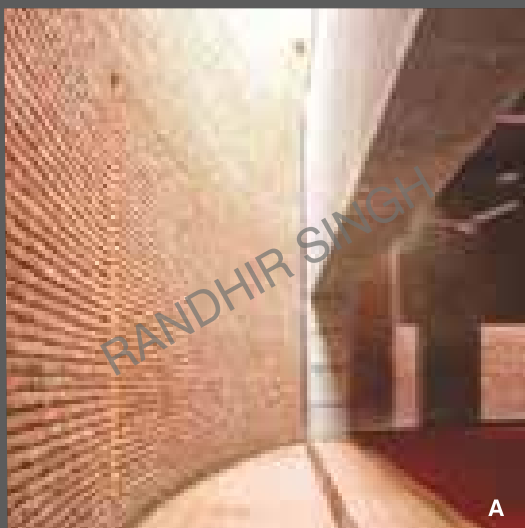


RAFAEL GAMO | www.rafaelgamo.com



Next Vegetales Headquarters
(CC Arquitectos) 2014

The image synthesizes the 3 elements that are central to my photographic work: the relationships between architecture and its' urban/natural environment, between architecture and light and, most importantly, between architecture and humans.



RANDHIR SINGH | www.randhirsingh.net



A Bait ur Rouf, Dhaka 2017

The Bait ur Rouf Masjid by Marina Tabassum was recently awarded the Aga Khan Prize for Architecture. I was fortunate enough to visit the mosque and was struck by the simplicity of material and the beautiful light streaming in from the skylights.

B DAM, Denver, USA 2007

Denver Art Museum, Hamilton Building -I was at this beautiful museum right before a big thunderstorm. The titanium panels accented the sharp angular shapes of the museum against the darkening sky.

C Igualada Angles, Barcelona, Spain 2016

Igualada Cemetery Chapel -This photograph of Igualada Cemetery Chapel is expressing the heavy physical and psychological weight of the chapel interior.



A



B



C



D



E

RICARDO OLIVEIRA ALVES | www.ricardooliveiraalves.com



E Tea House, Portugal 2008

This project is one of Siza's earliest commissions in Oporto and because it serves a commercial purpose any visitor can have the fruit of it, which is a wonderful thing! Tea house has amazing wooden construction details and is conceived in such a way that it becomes an extension over rocks morphology towards the north Atlantic sea.

A 25 Abril Bridge North Interior Cornerstone 2014

Pillar 7 is one of the main corners to north of the 25th April Bridge. Its base receives the cables mooring from the suspended structure of the north bank of the river Tagus. Its interiors distinguished by hollow, free space room where the strength and roughness of the structure materials reign.

B Caffé Florian, Venice 2016

Famous for being a reference since ancient times, Caffé Florian is beautifully complete in its décor and profusion of elements. However it's the human element in the photo, in the person of the counter basse musician, that reinforces the richness in memories, gaining a cinema to graphic spirit.

C Jew Stelae, Berlin 2012

In the Holocaust Memorial you feel exactly what you should. This incredible architectural piece is communicating with its visitors in a smashing, imposing scale. When I look up, I felt relief in the vanishing point above and felt like registering the sole freedom point I found in that concrete labyrinth.

D Milan Ethnographic Museum 2006

The colour and how the space works, are the two contrast elements in this photograph that made me want to do it. A big span is created by the black rigid stairway leading to a wide space in the level above reinforced by the height, white, organic ceiling.



RICARDO OLIVEIRA ALVES | www.ricardoliveiraalves.com



I BetweenTwo White Walls, Portugal 2017

Built in Algarve by the sea, this introverted single house holds Mediterranean construction influences. Cubic volume tries and interior over lap of plans result in massive levels of white which made it interesting and challenging. I had a spinning sun as a companion always giving the house big variety of compositions due to the huge nuances of shade.

F The Wall House, Portugal 2015

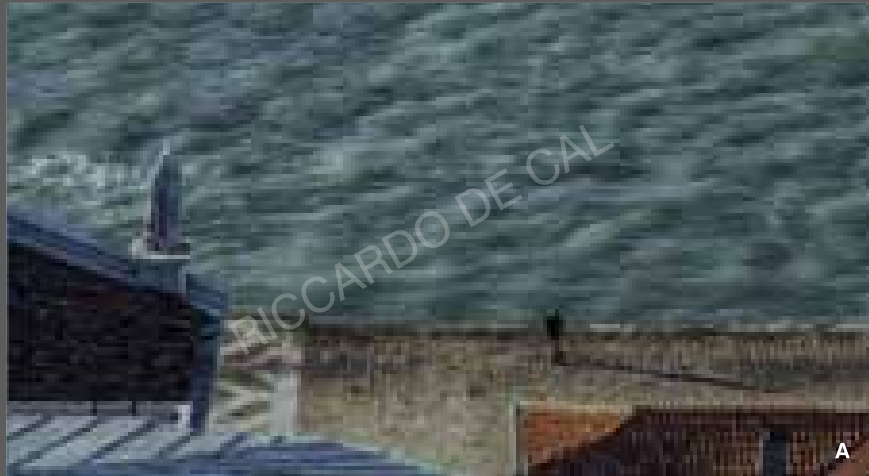
My intention when shooting this picture was to capture the way light is filtered by water and I remember, I absolutely wanted to have a model in the pool because it was of the most importance to have the human element giving it use, movement and scale.

G Tree Snake Houses 2013

By looking at these image we wouldn't imagine this is a tree house project suspended in stakes. Its absolute camouflage and suspension gives us unique experience. In this particular photo I wanted to register the contrast between this geometrical, clear and clean interior, looking, exposed to an organic wild outside. Like being in a cabin spaceship in the woods.

H Vasco da Gama Bridge 2006

You have to have interesting elements to tell a story, that's why I like intense images. In this shot, the bridge is the frontier element between the absolute stillness of the river and the tormented sky as if they had exchanged roles. I also enjoyed taking it at such far distance, the lack of scale gives infinitude to the image.



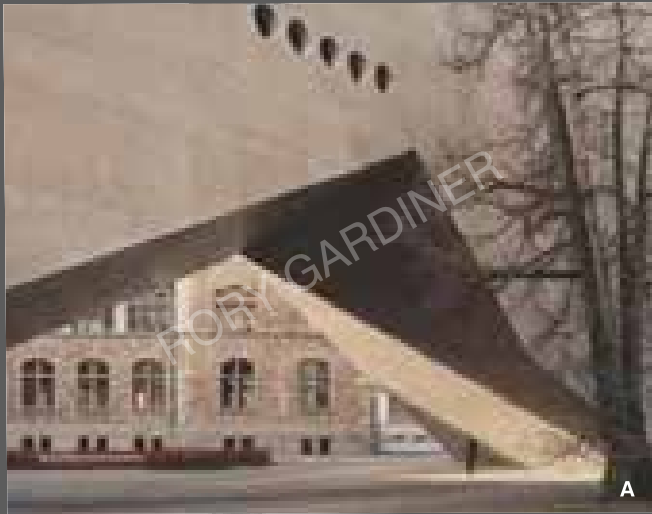
RICCARDO DE CAL | www.riccardodecal.com

A Dream of Venice 2016

Different cities succeed one another on the same ground and under the same name, they are born and die without having known each other. The Gods who live under the names and above the places have left without saying anything and their place were took by other stranger Gods.

B Dream of Venice - 2, 2016

With so much art the city was built, that every street runs along the orbit of a planet, and the buildings and places repeat the order of the constellations and the position of the brightest stars: Antares, Alpheratz, Capella, and Cefidi's.



RORY GARDINER | www.rory-gardiner.com



A Swiss Museum- A jagged cut out 2017

A jagged cut out in the base of the concrete structure creates an opening to allow visitors to enter the courtyard. Gardiner's images capture dramatic shafts of sunlight and shadow on the underside of this opening, which dwarfs the figures in the shots.

B Swiss Museum- Switzerland 2017

The Basel architecture practice selected raw concrete for the extension, to juxtapose the stonework of the existing museum building planned by Swiss architect Gustav Gull in the late 19th century.

C Swiss Museum-2017

Rory Gardiner visited Zurich in early March to shoot the new wing of Christ & Gantenbein designed for the museum, which houses the largest collection of cultural and historical items in Switzerland, the shot was taken when it was bathed in late winter sunlight.



A Modern Project 1990

London: A Modern Project shows the West way which was built in the late 60s. The local community campaigned to use the public space under the urban motor way for the market, bars and the sports facilities. The long exposure photograph brings together the dynamic energy of the city and the utopian possibility of living together.

RUT BLEES LUXEMBURG | www.rutbleesluxemburg.com



RYAN KOOPMANS | www.ryankoopmans.com



A Machine- Dubai, UAE 2017

I was in Dubai on an assignment to photograph a new building on Palm Jumeirah, driving there, I realized that the view was much more interesting from the elevated metro as it travels through the heart of the city providing a more interesting photographic perspective.

B Spread, Huaxi Village, China 2012

Standardized villas packed side-by-side form the two thousand-member socialist collective of Huaxi Village in rural Eastern China. I made this image when travelling across China to shoot Photographs for my 2012 book titled Paradise Now.

C The Wall – Kazbegi, Georgia 2017

In this image we see Gergeti Trinity Church, a 14th century church located at the base of Mount Kazbegi. After several hours of hiking from a nearby town, I reached this elevation, where the weather was clear and I was able to make the type of image that I had hoped for.



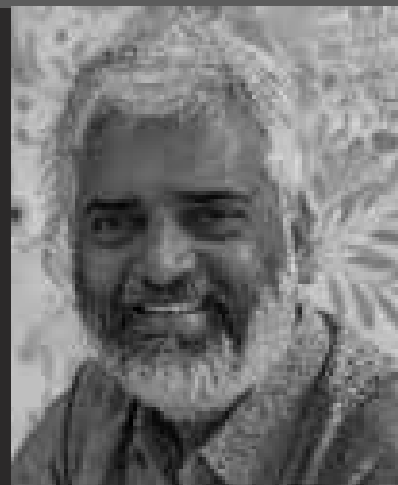
A Samrat Yantra, Jantar Mantar, Jaipur, Rajasthan 2009

Observatory built in 18th century, is a perfect match of Architecture, Science and Astrology. When structures are made with scientific discipline, it offers wonderful graphics.

B 'Winter Morning', Traditional Houses, Jaisalmer 2008

Jaisalmer fort has a gorgeous palace surrounded with beautiful stone houses. Daily chores with backdrop of colourful houses bathing in soft winter sunlight, was irresistible to photograph.

SAMIR PATHAK | www.samirpathak.com





A Internal Staircase of Abbas Vagh House, Sidhpur 2008

Interior, Sidhpur part of my project Time Present Time Past

B Palladio, Palazzo Barbarano da Porto

Palazzo Barbarano da Porto, built by the architect Andrea Palladio, year 1575

C Palladio, Villa Foscari, La Malcontenta

D Lady of the house at Roshanbhai Hararwala House, Sidhpur 2008

Interior, Sidhpur part of my project Time Present Time Past

SEBASTIAN CORTES | www.sebastiancortes.com



- E Street of Islampura, Sidhpur 2008
Exterior, Sidhpur, part of my project Time Present Time Past.
- F Palladio, Teatro Olimpico 2013
Last work by the architect Andrea Palladio, year 1579

SEBASTIAN CORTES | www.sebastiancortes.com





SEBASTIAN WEISS | www.le-blanc.com



String of Lights, Helsinki, Finland 2014

I am fascinated by the strict kind of architecture of the well-known tower of the Olympic Stadium in Helsinki and how the light emphasizes the construction of the building.



SERGIO CASTIGLIONE | www.sergiocastiglione.com.ar



segMOments, Milano, Italy 2016

Sergio Castiglione's series, Seg Moments, explores a new concept of photography where space builds itself in the finite life of light. From Monet to 2001 Space Odyssey feature film, time as a perception has been a major variable of life in culture, a way of thinking what is real.



KMYF Dialysis Lab, Bangalore 2016

The site for a dialysis centre was adjacent to an ancient South Indian Temple. The context in that sense was atypical of a generic urban setting. The position taken made a sensitive intervention into the context, the building became a backdrop to the existing scenario with the temple as the main protagonist.

SERGIO GHETTI | www.sergiogetti.com





A



B



C

SERGIO GRAZIA | www.sergio grazia.fr



A EXPO_2015-CHINA_PAVILLION – 2015- Milano, Italy

China's first national expo pavilion overseas drew worldwide appreciation for its design. Unlike most countries that went for bold, heavy structure, the designers of the China Pavilion - went on a for a serene, organic setting for visitors to explore Chinese structure.

B Hotel Flottant - Seine Design - Hotel - Paris - 2016

Seine presents a simple and uncluttered architecture. The floating facility adopts a discrete line. Elegant zinc roofs open facades outward while a central glass roof lets natural light enter at the heart of the building.

C Gehry- Fondation_Vuitton - Paris - 2006 - France - Paris 2006

In the Holocaust Memorial you feel exactly what you should. This incredible architectural piece is communicating with its visitors in a smashing, imposing scale. When I look up, I felt relief in the vanishing point above and felt like registering the sole freedom point I found in that concrete labyrinth.



SIMONA ROTA | www.simonarota.es



A Druzhba Sanatorium in Yalta 2012

The banal activity of spontaneous fishermen seems irreconcilable with the distant image of this strange building, Druzhba Sanatorium and yet each one, in its own way, seems to belong naturally to the same place.

B Ministry of Highways of Georgia 2011

The building Ministry of Highways of Georgia, was in the process of being reformed to become the current Bank of Georgia and my photographs would have probably been the last ones of the building as its architects had conceived it. The building appeared powerful out of the fog of a winter day.

C Gazebo At The Sports Arena Medeo In Almaty 2010

This photograph is part of the series Ostalgia, a subjective catalogue of monumental buildings that testify to a past of heroic intentions, but which reach the present completely eroded with disappointment.



Diversity in Time, "Corridors of Diversity" 2016

"Corridors of Diversity" is a multi-layered study of the diverse and intricate urban environment that characterises a city. The project explores the close-knitted relationship between individual households and the broader urban landscape through intimate glimpses into everyday life.

SIYUAN MA | www.shiyastudio.com



A



B



C

SUDHIR RAMCHANDRAN | www.sudhirramchandran.com



A Hampi 1989

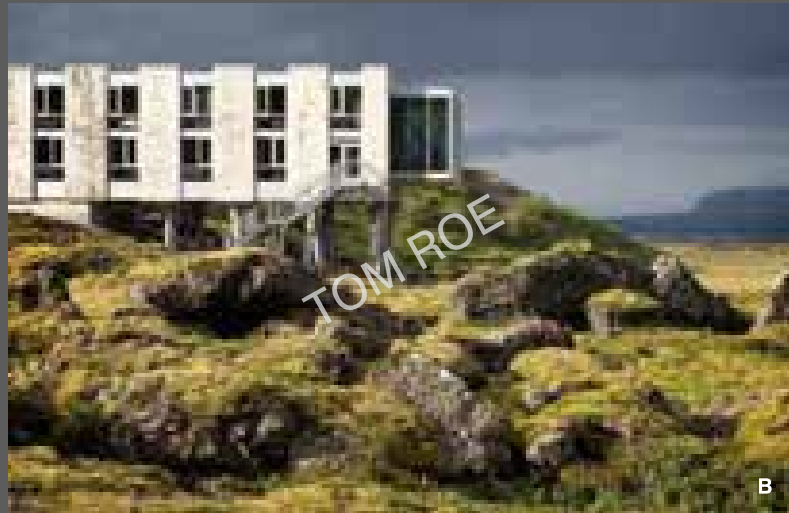
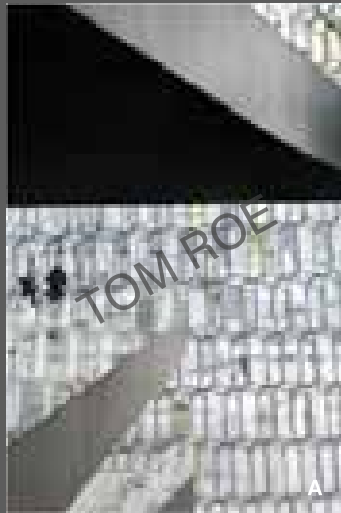
A glowing moon rises to witness the broken down ruins of an isolated Vijayanagar monument as it bravely tries to keep its form 500 years earlier. A double exposure on a single frame of the legendary temple kingdom of the great Hoysala Kings.

B The Howrah Bridge 2007

The sun glinted on the metal cantilever of the Howrah Bridge and swept across the Hooghly River. Suddenly the lady at the edge of the water walked towards me. I waited. When everything felt in perfect balance, I touched the ‘eternity button’. Photography is an “experience feeling” rather than a “physical seeing”.

C ‘NIGHT WATCH’ Rijksmuseum, Netherlands 2015

The warm color temperature near the painting splayed onto the ground as the cooler skylight lit the crowd. The teacher children activity in front was balanced when the couple on the right entered the scene. The man in red sauntered in and gave fulcrum to this balance.



TOM ROE | www.tomroephotography.com

A Harpa Concert Hall, Iceland 2014

In the photograph I tried to capture the patterns in the facade reflected in the glass balustrade with the heavy contrasting element of the floor above. The people give some scale and a sense of reality to what is otherwise quite an abstract image.

B Ion Hotel, Iceland 2014

A beautiful hotel in Iceland was photographed by me for the owners of the building. The weather was quite overcast but on one afternoon the sun came out for just a few minutes. I grabbed the shot before it went back behind the clouds and scrambled over the moss covered rocks.



Hotel Observatory and Northern Lights,
Iceland 2016

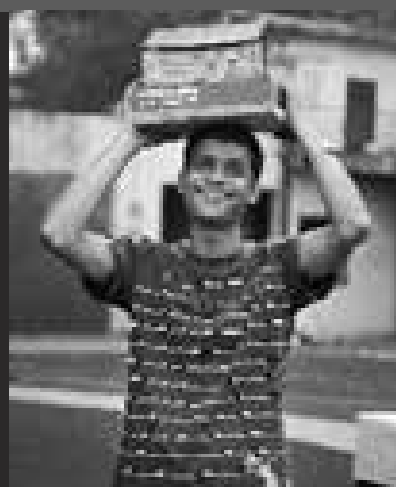
I wanted to photograph the Northern Lights in Iceland, but they came out only one night during my trip in 2016. I liked the contrast with the orange light from this small observatory. I ask the smokers at the observatory to wait inside for this 30 second exposure..



TOM STAHL | www.tomstahlphoto.com



VICKY ROY | www.vickyroy.in



World Trade Centre 2009

I documented the reconstruction of the World Trade Centre. My picture captures the people who have and are working hard to reconstruct WTC. This set of environmental portraits offers you a window into these anonymous, faceless spirits.



A Untitled – Interior Image - 2014

B Untitled – Interior Image - 2014

ZHENFEI WANG | www.hhdfun.com



fcdi.co.in

